

Ruislip Residents' Association **TOWN CRIER**

September 2021

www.ruislipresidents.org.uk



DON'T FORGET
2021
Subscription
Due

See page 12 or visit
www.ruislipresidents.org.uk
to pay online

Ruislip Gets Yarn Bombing To Brighten Up The Lockdown

Read about the project on pages 24-26

PRESIDENT
Brian Cowley

VICE-PRESIDENTS
Joan Davis & Peter Lansdown

CHAIRMAN
Graham Bartram

VICE-CHAIRMAN
Syeda Malik

TREASURER
John Hawley

SECRETARY
Patricia Wardle

CHIEF ROAD STEWARD
Alan Jones

DEPUTY CHIEF ROAD STEWARD
Alan Wenman

EXECUTIVE
Vivien Alcorn
Susan Browne
Mark Eidem
Clare Harris
Susan Midgley
John Swindells
Phil Taylor
Alan Wenman

EDITOR
Graham Bartram

✉ chairman@ruislipresidents.org.uk
© 01895 673310

CONTACT US
Patricia Wardle
Honorary Secretary
Ruislip Residents' Association
Mail Boxes Etc. Box No. 231
161 High Street
Ruislip, Middlesex
HA4 8JY

✉ secretary2@ruislipresidents.org.uk

🌐 www.ruislipresidents.org.uk

CONTENTS

3	<i>Editorial</i>
4	<i>Community Noticeboard</i>
5	<i>Chairman's Message</i>
6	<i>Health Matters</i>
9	<i>Your Town Needs You!</i>
10	<i>Education News</i>
12	<i>Treasurer's Corner & Subscription Form</i>
13	<i>Ruislip Lido</i>
14	<i>Flood Risk in Ruislip</i>
18	<i>Police Points</i>
19	<i>Annual General Meeting Agenda</i>
20	<i>Conservation Concerns</i>
24	<i>Ruislip Arts & Crafters</i>
27	<i>Centenary Tree Project</i>
28	<i>Planning Update</i>
30	<i>Eastcote & Ruislip Choral Society</i>
30	<i>The Arts Society Moor Park</i>
31	<i>Shaw Trust JETS Information</i>
32	<i>Annual General Meeting</i>

Editorial

A Return to Normality?

There are signs that we are gradually returning to at least a form of normality. The delivery of this issue of the *Town Crier* is such a sign, as the pandemic has prevented us from delivering the last two issues.

In this issue we have articles on postbox toppers, the Environment Agency's work on flood prevention and a page from the Shaw Trust with information to help people trying to get back into work after the pandemic.

Don't forget that this year's subscriptions are now due and there is an article about them by our Hon. Treasurer, John Hawley, on page 12. You will also find the subscription form on the same page.

We've had some new members of the executive committee: Susan Browne (conservation and planning), Clare Harris (Ruislip Retail Area) and Mark Eidem (traffic); but we still need a replacement treasurer, town planning officer (to help Susan) and a police liaison.

Graham Bartram

Graham Bartram, Editor Pro Tem

Please note that the views expressed in articles in the Town Crier are those of their authors and do not necessarily reflect the position of the Ruislip Residents' Association.

COMMUNITY ACTIVITIES

Syeda Malik

POLICE LIAISON

Vacant

CONSERVATION

Susan Browne

PUBLIC TRANSPORT

Graham Bartram

EDUCATION

Susan Midgley

RAF NORTHOLT LIAISON

Alan Wenman

WOODLANDS & ENVIRONMENT

Graeme Shaw

RUISLIP LIDO

Peter Lansdown

HEALTH

Joan Davis

RUISLIP RETAIL AREA

Clare Harris

MANOR RETAIL AREA

John Hawley

SOCIAL ACTIVITIES

Vivien Alcorn

MEMBERSHIP

Alan Wenman

TRAFFIC & PARKING

Mark Eidem

HS2

Phil Taylor

WEBSITE & IT

John Swindells

PLANNING

Vacant

FRIENDS OF EASTCOTE HOUSE GARDEN

 www.eastcotehousegardens.weebly.com

Gardening sessions take place every Tuesday and Thursday throughout the year starting at 9.30am, with occasional conservation sessions in Long Meadow as required.

Tools, refreshments and good company are provided – no previous gardening experience necessary. Meet in the car park at Eastcote House Gardens. We welcome volunteer gardeners from surrounding areas including Eastcote, Harrow, Hillingdon, Ickenham, Northwood, Pinner, Ruislip and Uxbridge.

The Gardens Café is now open daily from 9.00am (10am on Sunday) until 3.00pm.

THE ARTS SOCIETY, HILLINGDON

Lecture Programme September 2021-January 2022

Wednesdays at 2.00pm, St Lawrence Church Hall, Eastcote - admission £5 to non-members

8 September	Soviet Art: Revolution & Propaganda	Jane Angelini
12 October	Art Deco Painting – Britain, Europe & Beyond	Dr Scott Andersen
8 December	The Art and Nature in the Life and Works of Beatrice Potter	Elizabeth Merry
12 January	The Century of Deception; Hoaxes in the 18th Century	Ian Keable

WHAT'S ON AT THE COMPASS THEATRE

Some of the upcoming events at the Compass Theatre in Ickenham, whilst the Winston Churchill Hall is unavailable - check out  www.hillingdontheatres.co.uk for more information and to book.

14-16 October	Giuseppe Verdi's <i>A Masked Ball</i> (Opera)	Harrow Opera
21-23 October	<i>Old-World</i> by Aleksei Arbuszov (Play)	Proscenium
26 October	<i>The Elves and the Shoemaker</i> (Puppets)	Theatre of Widdershins
9-10 November	Who Lives? Who Dies? Who Tells Your Story? (Musical)	Starlight Youth Theatre Co
9 Dec - 9 Jan	<i>Beauty and the Beast</i> (Panto)	DK Productions

Chairman's Message

RRA



This is my first message since the world was turned upside-down by the Covid-19 pandemic. Although you received the last *Town Crier* in Autumn last year, it was written and printed before Covid-19 hit us. A lot has changed since then, but many things have stayed the same...

HS2 is ramping up its activities, with the first tunnel boring machine for the Ruislip tunnel arriving at the end of this year. We continue to represent our residents' interests at HS2 meetings.

The pandemic has hit air travel, and Heathrow Airport has closed Terminal 4 as it is not needed at present – they are only using Terminals 2, 3 and 5. This calls into question the whole Third Runway/Terminal 6 project. It could take years for air traffic to get back to 2019 levels.

The effects of Covid-19 are still being felt by both Hillingdon and Mount Vernon Hospitals, with visitor restrictions at both. In better news Hillingdon now has several new wards in modular buildings that are being used to prepare for the new hospital project. That is progressing and the Prime Minister, Boris Johnson, has visited the hospital

to be briefed on the new plans. Mount Vernon once again has a "minor injuries" unit called the Urgent Care Nurse Practitioner Service (see page 6 for more information).

If you are not already a member of the Hillingdon Hospitals NHS Foundation Trust, why not join - it's free! Visit: secure.membra.co.uk/HillingdonApplicationForm/ for the online membership form.

Our High Streets have weathered Covid-19 with fewer casualties than some, but please support our local shops, cafés and restaurants.

It's membership subscription time and you can pay it online using our website: www.ruislipresidents.org.uk

We rely on your subscriptions to pay for the running of the association, including printing the *Town Crier*, so please take a few moments to try out the online system and pay this year's subscription - it's £5.00.

I hope to see as many of you as possible at our Zoom-based AGM in October (see the back page), but in the meantime if you see me on the High Street feel free to stop me for a chat! ♦

Graham Bartram, Chairman, ☎ 01895 673310

Health Matters

URGENT CARE NURSE PRACTITIONER SERVICE

Mount Vernon Hospital now has an Urgent Care Nurse Practitioner Service for the care of patients with minor injuries.

Please note, this service is not a 'walk-in' clinic; patients are triaged and appointments, if required, are booked through NHS 111 or by telephoning the unit on 01923 844263. Appointments can be made for virtual consultations from 8am to 7pm and until 8pm for face-to-face appointments, seven days a week.

What can you book an appointment for?

The service treats minor injuries and illnesses that require urgent treatment:

- ◆ minor illnesses
- ◆ cuts and grazes
- ◆ minor scalds and burns
- ◆ strains and sprains
- ◆ bites and stings
- ◆ minor head injuries
- ◆ ear and throat infections
- ◆ minor skin infections / rashes
- ◆ minor eye conditions / infections
- ◆ suspected fractures.

A NEW HOSPITAL FOR HILLINGDON

Plans continue for Hillingdon's new state-of-the-art hospital which will support the very best in delivering healthcare for local people and patients.

The new hospital will provide the same range of services that we have now, but with improvements made possible by modern, purpose-built facilities.

It will also be built in the same location (next to the current hospital) and the hospital will remain open during construction.

The trust is always keen to hear from as many local people and patients as possible so please visit the website to have a first glimpse of what the building might look like, view the plans, and have your say.

thh.nhs.uk/redevelopment/exhibition

There is a wealth of information in the public exhibition section of the website.

Adult Inpatients

The current hospital has a mix of ward sizes and 28% of beds are single rooms. In the new hospital, in line with national

guidance, we anticipate wards will have four bedded bays with a minimum of 70% single rooms on each ward. This includes one isolation room per eight-bed cluster. An increased number of single rooms enables improved infection prevention and the mix of wards and side rooms supports patient choice where possible.

Urgent and Emergency Care Floor

There are many services which make up the urgent and emergency care floor including some surgery and gynaecology, a frailty unit, same day emergency care, emergency assessment, resuscitation, and acute mental health.

Services are being re-designed so that they are all on one, easily accessible floor to improve patient flows through the department. Patients will be clearly directed to the services they need and will have convenient access to all diagnostic and specialist services.

Key points that underpin the masterplan:

- ◆ The layout is designed to ensure that the right clinical services are next to each other, with relevant support services close by.
- ◆ In-patient floors will be higher up to maximise natural light and to provide views. Areas of high footfall such as the urgent and emergency care department and out-patients will be on lower floors to enable easy access.

- ◆ The new hospital will be located centrally on the site to reduce impact on neighbours. It has been designed to nestle sensitively into the streetscape and enhance the local environment.
- ◆ The design is flexible and future-proof, allowing for potential future expansion.
- ◆ A multi-storey car park is conveniently located providing direct access into the hospital. There will also be electric vehicle charging points and adjacent cycle storage.
- ◆ The extensive open space will positively contribute to the local streetscape and provide a valuable community asset.
- ◆ The design will incorporate natural, long-lasting materials, ensuring the building will age gracefully.
- ◆ The hospital will also be pandemic-resilient and include important features such as separate pathways and easy access to outdoor spaces.

The illustrations on the next page will give you some idea as to what the new hospital will look like. The plans are yet to be finalised and receive planning permission so they are subject to change.

BLOOD TESTS

Hillingdon Hospital is no longer carrying out blood tests for GPs, and Mount Vernon must be booked. Your GP will need to book an appointment for you at a community blood test facility. See the link below:

🌐 <https://bit.ly/3z4OJTD> ◆

The New Hillingdon Hospital



Eastern View of the Hospital

The Multistorey Car-park from the North



The Entrance Atrium



Looking North along Royal Lane





Three of Ruislip Residents' Association's Executive members have retired from the Committee. We need local residents to help give back to the community and make a difference.

The three vacancies are:
Treasurer • Town Planning Officer • Police Liaison

If you have skills and expertise in any of these areas, job descriptions are available. Please contact our secretary for a copy of the job description or should you want to contact the chairman for a discussion he would be happy to hear from you.

✉ secretary2@ruislipresidents.org.uk

✉ chairman@ruislipresidents.org.uk

☎ 01895 673310

Education News

Susan Midgley

AMALGAMATION OF LADY BANKES SCHOOLS

Following the departure at Easter of Mrs Sue Dyer, Headteacher of Lady Bankes Infant and Nursery School, a proposal was put forward by Hillingdon Council and the Federated Governing Body to amalgamate the school with Lady Bankes Junior School to form a single three-form entry school. The new school would be called **Lady Bankes Primary School** led by **Mrs Kate Needs**, the current Headteacher of the Junior School.

All pupils currently attending both schools, as well as those due to join Nursery, Reception or Year 3 in September 2021, would automatically have places at the new school.

A formal consultation was held in March. Pupils at both schools, Staff of both schools, Parents, Carers and Guardians of current pupils at both schools, relevant professional associations (e.g. staff unions), Community members and other interested parties as well as Local Councilors were consulted.

The new school would continue to provide an education that offers equality of opportunity for all regardless of age, gender, ethnicity, learning ability, religious or social background and attainment, including special needs and disabilities. Governors believe that bringing the schools together into a single primary school would enable them to improve further and achieve more for their pupils and their community.



There was general approval for the proposal and Hillingdon Council gave their blessing for the new amalgamated **Lady Bankes Primary School** to open in September.

Wishing the newly formed school continued success for its future.

UXBRIDGE COLLEGE PIONEERS TRAINING FOR ELECTRIC CAR TECHNICIANS

Uxbridge College is pioneering the latest in high tech learning with its new training technologies for electric and hybrid car maintenance and repairs.

The college recently took delivery of a Mini Electric which is being used hand in hand with its new state-of-the-art electric car simulator, the Car Train. Its EV (Electric Vehicle) courses will support the major shift towards the use of electric and hybrid vehicles as the UK moves to end its contribution to global warming.

Full-time, part-time and Apprentice Motor Vehicle students will use the Car Train to gain the necessary skills to progress safely to working on the real car with its high voltage electric systems. Amongst the Car Train's features are real car parts including a life-size ignition and keys – which actually start the simulator – a real electric charging system and hose tether charging lead as well as a miniature drive shaft and wheels which turn. Its touchscreen monitor shows CGI imagery of the

car dashboard, internal layout and other training diagrams.

Neil Benjamin-Miller, Head of Engineering – Technology and Innovation at Uxbridge College, said: This is really exciting for both students and staff at the college and it is also an excellent opportunity for employers large and small to start 'upskilling' their current staff to be able to work with electric cars. This year's figures show that nearly 7% of car sales are now electric or hybrid which is a massive increase year on year. Our training will cover mechanics to work on all current models.

EV courses at Uxbridge College are approved by the industry body the EMI (Institute of the Motor Industry) which develops skills benchmarks and qualifications and represents the UK industry nationally and globally.

Car Train EV accredited courses are run at Levels 1, 2 and 3 – starting with First Responder skills ie dealing with accidents – and progressing to maintenance and repairs. The college aims to introduce a Level 4 course which covers battery maintenance and repair from the autumn.

 education@ruislipresidents.org.uk ♦

Treasurer's Corner

John Hawley

Many thanks for all your subscriptions and donations to enable us to function on your behalf. It is good to be able to report that we ended up with a surplus in 2020 (subject to certification), although this was mainly due to only being able to produce one issue of the *Town Crier*.

Subscriptions remain at £5, but please continue with your generous donations which are a very necessary part of our funding.

You can pay your subscription online at:

www.ruislipresidents.org.uk

and click on the yellow "Pay Your Subs" button in the menu bar. Alternatively, you can fill in the form below and either post it to Mail Boxes Etc, or drop it in to Mail Boxes Etc, near Ruislip Station, or to Chimsons Chemist (29 Victoria Road), near to Ruislip Manor Station. We hope this will now assist members in the Ruislip Manor area and save them some postage. ♦

Please detach and return this form if you wish to pay your RRA subscription by cash or cheque:



Post to: RRA, Box No. 231, Mail Boxes Etc, 161 High Street, Ruislip, Middlesex HA4 8JY
or hand deliver to Mail Boxes Etc or Chimsons Chemist (Ruislip Manor) in an envelope.

Please find enclosed £5.00 for the 2021 subscription and a donation of £ giving a total of £ which is paid by cash*/cheque* (* please circle method chosen)

Cheques should be made payable to 'Ruislip Residents' Association'. Please do not send coins by post, and avoid using staples or sellotape. The cashing of your cheque is proof of its receipt.

Name(s):

Address:

..... Post Code:

Please supply your email address if you are interested in helping to deliver the *Town Crier*.

Email address:

Ruislip Lido

Peter Lansdown

Hillingdon Council carried out a trial at the Lido over the Easter weekend to aid the reduction in overcrowding and associated traffic problems of recent times. The trial consisted of an experimental anti-clockwise one-way system for visitors walking, running or cycling around the perimeter path and a maximum number of 1,200 people allowed on site at any one time, with marshals conducting a live count at all entrances and exits. The trial was repeated over the early May Bank Holiday weekend. Similar conditions have been in place over weekends during the school summer holidays, but these have now been withdrawn.

Although the weather was cloudy and cool for most of the time, the trials

were considered successful in that they provided some useful information. In spite of the cool conditions the 1,200 limit was reached on occasions.

In mid-September our new Council Leader, Cllr Ian Edwards, held a meeting on Willow Lawn in order to talk about parking problems with local residents. About 80 people were present and a robust discussion ensued. Cllr Edwards said that he intends to set up consultations on proposals to ease/solve the parking problems very soon. I also understand that consideration is being given to allowing only a maximum number of visitors on site at any time. This number still to be determined. We will keep you informed of any decisions. ♦



Flood Risk in Ruislip

RUISLIP – PARK WOOD AND PINN MEADOWS FLOOD PARTNERSHIP

The Ruislip – Park Wood and Pinn Meadows Flood Partnership are working together to understand the causes of flooding in the Ruislip area and to identify effective solutions to reduce the risk in the future.

PROJECT UPDATES

The project is progressing through the appraisal phase. This involves the identification and outline design for a preferred option and approval of the Outline Business Case (OBC). The process is complex, involving many different technical, economic and environmental factors. The OBC details the appraisal work on the short listed options and the selection of the preferred option to be taken through a Full Business Case (FBC) and detailed design.

OPTION DEVELOPMENT

We are entering an interesting phase for the project and hope to have updated options to share with local communities later in 2021. The work we are doing now will continue to develop our understanding of how the options need to be designed to be most effective. We will then be building up to full consultation on

these options during 2022. If you would like to be notified when this consultation goes live then please sign up to receive updates through our engagement portal (details and QR code on page 16).

QUICK WINS

While the project team is developing options as part of the wider flood alleviation project in Ruislip, Hillingdon Council developed a list of quick win interventions in consultation with residents and the wider project team. The aim of these interventions is to maximise opportunities to create more space for water in the natural floodplain, slow the flow into the River Pinn and increase the understanding of how water interacts between roads, sewers and rivers during a flood event.

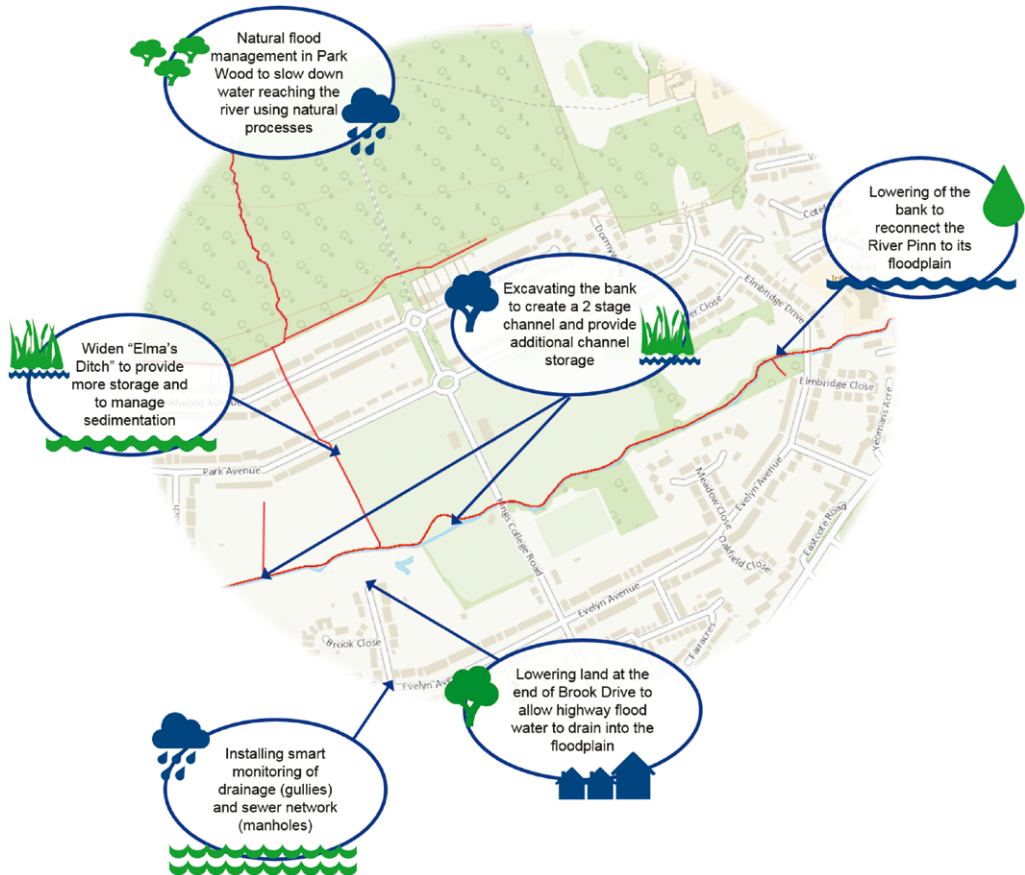
The Council developed the detail of the highest priority interventions, obtained an Environmental Permit from the Environment Agency and have now implemented the works. The Park Wood and Pinn Meadows project contributed £25,000 towards delivery of the highest priority elements. The first phase of these works has been completed, as shown in the image on the right.

LEAKY DAMS IN PARK WOOD

Thames 21 were funded as one of the Defra Community Natural Flood Management (NFM) Pilot Studies to further the science behind NFM in Park Wood - part of Ruislip Woods SSSI and National Nature Reserve. The project has helped to bring the community together and has created a network of leaky dams that slow the flow from the woods towards the River Pinn (see the photograph on page 17).

Although the Defra-funded component of the project has now been completed, further developments will continue, led by local community groups. Ruislip Woods Management Advisory Group (RWMAG) will continue to maintain and modify structures based on lessons learnt and implement further NFM along the channels within Park Wood.

A multi-faceted approach will be taken, including the development of ponds for



example, to offer storm water mitigation. This work will take place in conjunction with the Council's Green Spaces team and members of the North Ruislip Flood Action Group in accordance with the Natural England consent for works.

The work currently being undertaken by Jacobs to assess flood risk locally, suggests that NFM is useful in reducing flooding locally, but only for the most frequent flood events. Therefore other measures, such as an embankment will likely be required to protect the community from more extreme flood events. The precise scale, location and design of this is still to be determined and the project team will continue to work with residents and local interest groups in this area to consider the best approach for the local environment.

ENGAGEMENT

It's been an eventful year and coronavirus continues to affect us all. Unfortunately, we have not been able to hold face-to-face public consultations as we would normally do. Instead, we have turned to technology and innovative ways of maintaining effective engagement throughout the project. We have now launched our new engagement portal – Engagement HQ.

It is one of the leading platforms and has been used by public organisations across the world. This contains all the detail you

need to know and how to get involved through various interactive tools and features. Please find everything related to the portal at:

[followpinnfloodprojects.com](https://www.followpinnfloodprojects.com)



By signing up to be kept informed, you will receive an automatic notification when new information is shared.

REPORTING FLOODING

After an event, where there has been significant flooding (internal property flooding) local councils have a duty to undertake a Flood Investigation so please report issues to them.

Please report flooding of any type to Hillingdon Council using the form on their website:

www.hillingdon.gov.uk/flooding

They will ask if you are happy to share the data you provide with the Environment Agency and other partner organisations in order that we can better understand the flooding issues.

It is also important, if you have been flooded from a public sewer to complete Thames Water's sewer flooding questionnaire on their website and return it to them at the address on the form:

🌐 www.thameswater.co.uk/media-library/home/help/emergencies/flooding/sewer-flooding-questionnaire.pdf

HOW YOU CAN HELP US

- ◆ Champion the need for managing flood risk locally.
- ◆ Help us identify additional sources of funding.
- ◆ Tell us how you have been impacted by flooding.
- ◆ Share your knowledge of the local area with us.

WHAT HAPPENS NEXT?

- ◆ We will be updating our engagement portal with more information about the project options and how you can have your say on them.
- ◆ The project team will continue to work with communities and other partners to secure funding for this project as we can only progress to the point where we are ready to undertake work on the ground if we have secured full funding.

If you want more information or want to get involved please contact:

Environment Agency:

✉ RuislipPWPM@environment-agency.gov.uk

Hillingdon Council:

✉ flooding@hillingdon.gov.uk



Environment Agency



A leaky dam, providing attenuation in Park Wood (along Coppickers Channel) on 28th January 2021.

CONTACT NUMBERS

Environment Agency customer service line for general enquiries:

☎ 03706 506 506

Environment Agency Incident hotline to report flooding or other environmental incidents:

☎ 0800 80 70 60

Floodline to sign up to receive flood warnings:

☎ 03459 88 11 88 ◆

Police Points

Graham Bartram



DOG THEFTS

As you may have heard in the media, dog thefts are on the rise. Here is some advice to reduce the chance of your dog from being stolen:

- ◆ Make sure your dog is microchipped and the details are correct on the pet registration database you have chosen.
- ◆ Fit your dog with a collar with your surname and contact number on it, not your dog's name.
- ◆ Make sure you take pictures of your dog from various angles.
- ◆ Pets are easily stolen from a garden or yard when left unattended, even if for just a few minutes. Front gardens are very vulnerable.
- ◆ Never leave your dog unattended in a car – especially on warm days – as it is not just dangerous for their health but allows them to be easily targeted by thieves.
- ◆ Leaving your dog alone outside a shop is another easy opportunity for a thief, even if you are only away for a minute.
- ◆ Social media can be viewed by thieves, so be careful about what you post. Be particularly careful with details of where you live, the type of dog you have.

If your dog is stolen contact the police and provide as many descriptive details as you can and make a note of the crime reference number. Contact your Hillingdon Dog Wardens (03335 775 070) to make them aware. And finally contact the microchip database holding your dog's details and update them about the theft.

West Ruislip

Sgt James Bishop, PC Marco Fetta, PC Darren Roe, PCSO Paul Brighton

✉ westruislip.snt@met.police.uk

☎ 020 8721 2547

Eastcote & East Ruislip

Sgt Damian Keyes, PC Chanelle Drumond, PC Dewayne Hamilton, PC Andries Swart, PCSO Kara Remick, PCSO Gemma Robinson

✉ eastcote.snt@met.police.uk

☎ 020 8721 2548

Manor

Sgt Damian Keyes, PC Andrew Phillips, PC Ajay Shah, PCSO Gurbinder Sandhu

✉ manorward.snt@met.police.uk

☎ 020 8721 2549 ◆

Annual General Meeting

*7.45pm, Wednesday, 27th October 2021
via Zoom*

Given that things are starting to get back to normal we had hoped to hold a traditional in-person AGM this year, but as the Winston Churchill Hall is being used as a Vaccination Centre, and the Barn can be very cold on a late Autumnal evening, we have decided to repeat the Zoom format we used last year.

To join, please install Zoom on your computer, tablet or phone and use the URL or QR code below to join. The connection will be open from 7.35pm to give 10 minutes for people to join us.

<https://bit.ly/3tfYBbK>



You can also join the meeting, audio only, by dialling the number below and using the meeting ID and passcode given:

📞 020 8080 6591 or 020 8080 6592

Zoom Meeting ID: 840 2100 3800

Zoom Passcode: 963361 ♦

AGENDA

1. Welcome and Apologies
2. Talk by David Simmonds CBE MP (Ruislip, Northwood and Pinner)
3. Minutes of the Annual General Meeting 2020
4. Chairman's Report
5. Treasurer's Report and Annual Accounts
6. Election of Chairman and Executive Committee 2021-2022
7. Open Forum - with questions to a panel of RRA representatives
8. Any Other Business
9. Close of Business

The meeting will end at 10pm. Please send any nominations for the election and any items for the Open Forum to the Secretary by Wednesday, 20th October ♦

Conservation Concerns

Susan Browne

Ruislip has a rich historic heritage including the Manor Farm site that comprises a 13th century Great Barn, a 13th Century church, a 16th Century Little Barn, an early medieval Motte & Bailey and a number of houses from the 16th Century onwards. It also contains a Conservation Area comprising houses built in the early 20th Century, when the area was developed on "garden suburb" lines.

WHY IS CONSERVATION IMPORTANT?

Conservation is about the protection of these assets, and the preservation of the character of the area, for the benefit of current and future residents. The danger is that without continuous attention a series of minor alterations could, over time, easily result in the gradual but permanent damage to the heritage and character of Ruislip.

WHERE ARE THE HISTORIC ASSETS IN RUISLIP?

The London Borough of Hillingdon (LBH) designates specific areas as "Conservation Areas", or "Areas of Special Local Character" (ASLCs), based on a score against nine criteria relating to townscape significance,

architectural significance and historic significance.

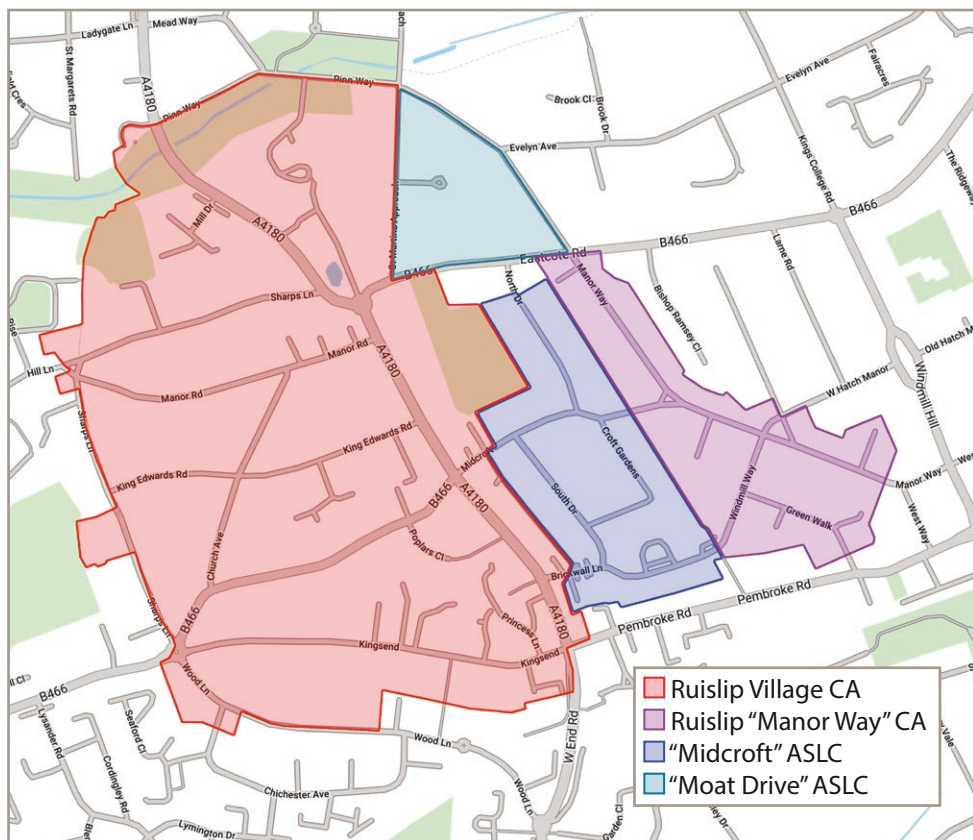
Conservation Areas are areas of special architectural or historic interest, the character or appearance of which it is desirable to preserve or enhance. ASLCs are areas which contain elements of local character and identity that the Council also wishes to preserve.

Within Ruislip there are two Conservation Areas and two ASLCs:

Ruislip Village Conservation Area:

The Ruislip Village Conservation Area (RVCA) was designated in 1969, and was one of the first such areas to be agreed within LBH. It then contained only the medieval village centre comprising Manor Farm (the administrative centre of the Manor of Ruislip), St. Martin's Church (the ecclesiastical centre of the Parish of Ruislip), and the ancient buildings at the north end of Ruislip High Street and south end of Bury Street – all of which are "Listed".

In 2009 the RVCA was extended to include all of Ruislip High Street and the



later residential “garden suburb” area immediately to the west, built upon the Park Estate and Withy Crofts - meadowland belonging to the King’s College Estate - as well as the old hamlets of Great King’s End and Little King’s End. It is a good example of “Metroland” development which followed the arrival of the railway in the early 1900s, having many high quality residential houses set in mature gardens.

The RVCA is rich in historic buildings and features – containing 23 Statutorily Listed

buildings, 26 Locally Listed buildings and one Scheduled Ancient Monument.

Ruislip “Manor Way” Conservation Area:


Manor Way is architecturally and socially important because it has the earliest cottages built by the Ruislip Manor Cottage Society, founded in 1911, to provide attractive and decent housing for working people.

The two ASLCs are “Midcroft” and “Moat Drive”.

Ruislip also contains an “Archaeological Priority Area” (APA) called the “Ruislip Motte & Bailey APA” - covering Park Wood, Ruislip Lido and adjacent areas. Within this area are two Scheduled Ancient Monuments: the Motte & Bailey - in the Manor Farm site, and Park Pale - an earthwork forming the boundary of the medieval deer park. These archaeological remains are an important and valuable local and national resource.

DO YOU LIVE WITHIN A CONSERVATION AREA OR ASLC?

The areas shaded light red and purple on the map on the previous page indicate the location of two Conservation Areas and the ASLCs are in light blue and turquoise. You can view a ‘Heritage Assets Map’ on the LBH website which displays all relevant designated and non-designated heritage assets in the Borough. People can search by address/postcode using the link below:

 www.hillingdon.gov.uk/heritage-map


LIVING IN CONSERVATION AREAS

If you live within a conservation area it is important that you are aware that some ‘permitted development’ rights (that is, permission granted automatically for certain works to single family dwelling houses) are restricted. Therefore, planning permission is likely to be required to alter, extend and/or demolish buildings and even pruning trees can require permission within designated areas.

Planning applications for development in conservation areas should be supported by a heritage statement. Where they exist, conservation area appraisals and management plans should be taken into account when designing proposals. The assessment of all applications will take into account national and local planning policies - see Hillingdon’s Local Plan:


 www.hillingdon.gov.uk/local-plan

Trees and other landscape features may contribute to the special character and appearance of a conservation area. Find more information in relation to carrying out works on trees in conservation areas refer to this page on the LBH website:

 www.hillingdon.gov.uk/article/3865/Carrying-out-work-on-trees-in-conservation-areas

For further guidance on building in conservation areas refer to Historic England that provides some useful information, in the links below:

Living in a Conservation Area

 historicengland.org.uk/advice/your-home/owning-historic-property/conservation-area/

Tips for Home Owners

 historicengland.org.uk/advice/your-home/owning-historic-property/conservation-area/home-owner-tips/

DEMOLITIONS

Within a conservation area, planning permission is required for 'relevant demolition' of a building (with a volume of 115 cubic metres or more) or to take down any wall, gate or fence (more than 1m high along a highway, or 2m high elsewhere). In general, permission will not be granted for the demolition of any buildings or structures that make a positive contribution to the character or appearance of a conservation area.

It's an offence to carry out 'relevant demolition' without planning permission or compliance with relevant conditions of a planning consent, of which you can be prosecuted.

To report unauthorised works in conservation areas, refer to the LBH website:

 www.hillingdon.gov.uk/planning-enforcement

To make general enquiries you may email the LBH Conservation team on this email address:

 heritageconservation@hillingdon.gov

For more in-depth discussions, or detailed advice regarding development proposals a pre-application would need to be submitted.

KEEPING AN EYE ON PLANNING APPLICATIONS

While the majority of Planning Applications are approved by the Council, there

are a number that cause us some concern due to the potential impact on the Conservation Areas or Areas of Special Local Character (CA/ASLCs). If we have serious concerns about a proposed development, we contact the Council Planning Officer and request refusal, giving the main reasons for reaching that view. Under the National Planning Policy Framework (NPPF) there is now a presumption in favour of development, so we look at applications carefully and constructively, and sometimes suggest alternative designs.

The most common reasons for refusal of applications by the Council were:

- ◆ the development would be harmful to the character and appearance of the Conservation Area,
- ◆ the development would be overbearing, visually intrusive, and dominant in relation to neighbouring properties and the local street scene,
- ◆ there would be insufficient parking provision or amenity space, and/or
- ◆ it includes sub-standard accommodation (eg. lack of outlook, lack of natural light, low ceilings).

It is important that we respect the historic environment and recognising we are custodians. In appropriately preserving and/or conserving the environment we are enabling future generations to be able to experience it and learn from it. ◆

Ruislip Arts & Crafters

Fran Tracey

@ruislipartsandcrafters

@ruislipcrafts

CREATIVITY AND CONNECTION IN THE PANDEMIC

Ruislip Arts and Crafters came to life on Facebook during Tier 4 and in the lull between Christmas and New Year 2020. The aim of the group started by Fran Tracey, Natalie Walker (Red Onion owner) and Sarah Green is to bring local arts and craftspeople together, sharing and encouraging skills and 'makes' and working together on community projects, with the fabulous Red Onion as our creative hub.

It took off; just a bit. By mid-April we had almost 700 members.

In January Sarah Green suggested creating Postbox toppers in Ruislip and Eastcote, drawing on existing skills in the group, as well as teaching new ones via Google Meet. Initially we created four for Valentine's Day. Due to their popularity, about 40 makers created over 30 Spring/Mother's Day/Easter toppers using crochet, knitting and fabric skills. Karen Norton, Vicky Vincent and Jennsie Gray have created trails and photo montages, and their 'fame' swiftly spread across local social media, with people planning walks and cycle tours to visit them.

Each topper has a QR code which links to the donation page of a charity, including: Young Minds, London's Air Ambulance and Hillingdon Foodbank.

Even the less positive aspects (some vandalism and loss) have elicited a supportive response from within the group and the community. We've been interviewed by the Mayor of Hillingdon, MyLondon, filmed, and featured on Royal Mail's Instagram feed and on National TV News. We are lucky to have the support of such as Spreading Sunshine Ruislip and Eastcote and TAG café.

As a group we have great plans - an Arts Grant from the London Borough of Hillingdon means we can fund workshops, and we are exploring the idea of an exhibition. We would also like to work within care homes and with young people and are currently planning a community art project using our strong network of talented local people. We feel we are achieving our goals of bringing people together via creativity and positivity, and giving people a purpose during challenging times, with the bonus of positive mental health benefits too.





The photographs on the previous page and above show some of the many toppers in Ruislip. You can also see Sarah Green & Fran Tracey with their Valentine's Day topper and Lorraine Reed-Wenman with her Easter one.

You can see the locations and photographs of toppers in Ruislip on this Google Map:

<https://bit.ly/3I53YqK>

Local author, Belinda Goldsmith, has created a book on the subject called *Lockdown Letterboxes* (ISBN 97985066373728), available at the Red Onion and TAG Cafés.



Our creative neighbours in Ickenham Postbox Toppers made the wonderful topper (shown above) as a tribute to HRH The Duke of Edinburgh. It was designed and made in seven days and installed early on the day of his funeral and removed later the same day to preserve it. It appeared in the national media coverage of the day. ♦

Centenary Trees & Thames 21

Pat Wardle

CENTENARY TREE PLANTING

Due to Covid the group has been unable to progress in planting trees. Before Covid we had planted trees at every school in our area, except Ruislip High School which had asked that we delay due to work that they were having completed and Whiteheath Infant School (the lockdown just pipped us to the post).

As we slowly come out of restrictions we are beginning to plan for the future, and have applied to the Co-op for community funding. We won't know until after this *Town Crier* is printed if we have been successful. We are hoping to plant orchards in Bessingby Park and also Ruislip Common (although we have to get these plans authorised by the Council's Green Spaces Team).

We also plan to link up with Urban Trees to see if we can plant trees in streets, etc. round the area.

If you wish to plant a tree in your own garden and would like some assistance, or if you have any other good ideas for us to consider, please contact me on the secretary address.

WATERCOURSES SUB-GROUP

This sub-group has been meeting with representatives of Thames 21 to try to achieve the best outcome for residents in the project that they have put forward for the Cannon Brook and surround. Thames 21 are a charity and received the money for this project from HS2's aid fund intended to offset some of the devastating work they are doing in our area.

More information on this project can be found on our website. We are looking at building bat boxes and working with local schools to place them in the best locations to attract bats, which are in decline in our area and indeed most areas in the country.

We will be looking at replanting the banks of Cannon Brook at Ruislip Common once the work has been carried out. The plan is to use local species and perhaps to replant some taken from the River Pinn.

If you would like to be involved in some way, please contact me on the secretary address:

✉ secretary2@ruislipresidents.org.uk ♦

Planning Update

Susan Browne

Covid-19 has meant that we have not been able to produce the number of Town Crier issues that we would normally do, so there are more planning items to report than normal.

Please note that the shop names are for

location purposes and do not necessarily mean that those firms are the party applying for planning permission.

The table below gives planning applications and appeals that have been refused recently: ♦

Address	Application
51 Kingsend 3546/TRE/2020/215	To carry out tree surgery including a crown reduction by 1-2m to One Scots Pine T1 on TPO 477
15 King Edwards Road 43419/APP/2020/2505	Replacement windows
33A Ickenham Road 16501/APP/2020/2497	Part two storey part single storey rear extension with alterations to side elevation
33 Midcroft 16498/APP/2020/2630	Single storey side extension and part conversion of garage to an en-suite shower room
69 High Street (Vodafone) 1983/APP/2020/2657	Extension at the front of the property above the shopfront to provide 1 x self contained flat above (use class C3) at second floor level, and erection of a new three storey building at the rear of the property to provide 2 x self contained flats (use class C3) above an open loading bay; with associated bin and cycle store.
The Six Bells, Ducks Hill 14387/APP/2020/2775	Proposed barn extension to provide a restaurant at ground floor and 10 no. guest rooms at first floor
28 Manor Road 75898/APP/2020/3000	Single storey rear extension and conversion of roofspace to habitable use to include 2 x side dormers and 2 x front, 2 x rear and 2 x side rooflights
178 -182 (Manor Developments) 28388/ADV/2020/35 (Appeal 9207)	Illumination of existing sign
46 Bury Street 52653/TRE/2020/284	To carry out tree surgery including a reduction to One Scots Pine, T1 on TPO 311
44 Sharps Lane 24999/APP/2020/3145	Single storey side/rear extension, conversion of garage to habitable use and addition of a front dormer

7 & 7a Kingsend 16571/APP/2020/3512 & 3513	Conversion of roofspace to habitable use with 3 x rooflights
162 High Street (Nail World) 12967/APP/2020/3394	Single storey rear extension to ground floor shop unit and first floor rear extension and conversion of existing flats into 3x 1-bed self contained flats
38 Sharps Lane 74288/APP/2019/3480 (Appeal ref 9176)	Single storey side and rear extensions, alterations and loft conversion with hip to gable roof extension, rear dormer, front rooflights, hardstanding and outbuilding.
28B Kingsend 73975/APP/2020/3392	Addition of a 1st floor to provide 2 3-bed self-contained flats with associated parking and amenity space.
166 High Street 4079/APP/2020/3662	Change of use from Use Class E(a) to Use Class E(b) and single storey rear extension and new extraction duct to the rear.
51 Ickenham Road 24650/APP/2021/59	First floor rear extension with habitable roofspace to include 2 x rear rooflights.
44 Sharps Lane 24999/APP/2021/349	Single storey side/rear extension, conversion of garage to habitable use and addition of catslide roof with front dormer
24 King Edwards Road 44416/APP/ 2021/387	Erection of a detached garage with habitable roofspace for use as a self-contained flat.
15 Sharps Lane 23160/APP/2020/2106 (Appeal ref 9296)	Conversion of roofspace to habitable use to include a rear dormer and 1 x front rooflights
21 Manor Road 71722/APP/2021/526	Conversion of roofspace to habitable use to include a rear dormer and conversion of roof from hip to gable end
69 High Street (Vodafone) 1983/APP/2021/550	Extension at the front of the property above the shopfront to provide 1 x self-contained flat above (Use Class C3) at second floor level, and erection of a new three storey building at the rear of the property to provide 2 x self-contained flats (Use Class C3) above an open loading bay; with associated bin and cycle store.
10B Monarchs Way 66997/TRE/2021/66	To pollard one Oak, T8 on TPO 274
33A Ickenham Road 16501/APP/2021/1706	Details pursuant to discharge conditions Nos. 3 (Materials) of planning permission Ref: 16501/APP/2020/2497 dated 22/02/2021.
51 Ickenham Road 24650/APP/2021/59 (Appeal ref 9407)	First floor rear extension with habitable roofspace to include 2 x rear rooflights.
2 Midcroft 4918/APP/2021/1103	Erection of a part 3 storey, part 4 storey residential building to create 1 x 1-bed, 3 x 2-bed, and 5 x 3-bed self-contained flats with associated parking, amenity space, refuse and cycle storage following demolition of existing petrol filling station / car wash.
33A Ickenham Road 16501/APP/2021/1336	Erection of a part single, part double storey rear extensions with the insertion of 2 rear dormers.

Eastcote & Ruislip Choral Society

🌐 www.eastcote-ruislip-choral.org

The choir meets every Tuesday at Ruislip Methodist Church, Ickenham Road, from 8pm to 10pm and welcomes new singers.

Their next concert is Handel's *Messiah* on Saturday, 30th October at St. Edmund's Church, Northwood Hills HA6 1QS, at 7.30pm (£12).

The Christmas concert is on Saturday, 11th December at St. Edmund's Church, Northwood Hills HA6 1QS, at 3.30pm. ♦



© Eastcote & Ruislip Choral Society

The Eastcote & Ruislip Choral Society

The Arts Society Moor Park

🌐 www.moorparkdfas.com

The society normally holds its Wednesday morning talks, at Winston Churchill Hall, but whilst it is being used as the Vaccine Centre they are being held at Pinner Village Hall. The meetings are open to all and start at 10:50am; complimentary coffee/tea available from 10:15am. A donation on the door of £10.00 per person is requested. No booking is required.

29 September 2021 - *The Honourable and Dishonourable Art of Acting* - Malcolm Jones
 20 October 2021 - *The Ups and Downs in the Lives of the Impressionists* - Carole Petipher
 17 November 2021 - *Gaudi and Barcelona* - Clyde Binfield
 19 January 2022 - *Fire, Smoke & Iron: Spanish Artists & the Bilbao Iron Industry* - Martin Lloyd
 16 February 2022 - *Barbara Hepworth* - Linda Smith ♦

JETS

JOB ENTRY:
TARGETED
SUPPORT

BACK INTO WORK

Has COVID-19
left you
struggling to find
work?

Are you sending
applications and
not hearing
back?

Are you selling
yourself short
in job
interviews?



We want to support you during these hard times and you may be able to receive free specialised support from Shaw Trust.



Find out how we can help you by scanning the QR link above or going to:
<https://rebrand.ly/JETS-Back-Into-Work>

Alternatively, to speak to someone from our local team, you can email:

WLAintegration@shaw-trust.org.uk

Features and benefits of the JETS Programme

- ✓ Personal advisor
- ✓ Direct access to live vacancies
- ✓ CV building and Interview skill building
- ✓ Learn new skills and change sector
- ✓ Confidence building and job search guidance

shaw trust

West
London
Alliance 
A BETTER WEST LONDON FOR ALL
NOW AND IN THE FUTURE




Department
for Work &
Pensions
In
partnership
with

RUISLIP RESIDENTS' ASSOCIATION ANNUAL GENERAL MEETING

7.45pm, Wednesday, 27th October 2021
via Zoom

Zoom session opens at 7.35pm

The talk will be by David Simmonds CBE MP
Member of Parliament for Ruislip, Northwood and Pinner
followed by an Open Forum, with questions to a panel of
RRA representatives. The meeting will end at 10pm
Open Forum items to the Secretary by Wednesday, 20th October 2021