

LEGEND: SOFT LANDSCAPING

- GROUND COVER: deciduous shrub ground cover planting with specimen shrubs.
GROUND COVER: evergreen shrub ground cover planting with specimen shrubs.
GROUND COVER: ornamental grass ground cover planting as detailed.
GROUND COVER: coniferous ground cover planting as detailed.
DECIDUOUS NATIVE HEDGE: shrub hedge as detailed.
NATIVE SHRUB / SCRUB PLANTING: native shrub planting mix as detailed.
PLEACHED TREE PLANTING: 2x2m panel on 2m clear stem, to be maintained tightly clipped.
TREE PLANTING: deciduous tree planting, Tree Canopy spread illustrated at 25 years growth.
TREE PLANTING: mature tree spread illustrated at 50+ years growth.
EXISTING HEDGE / VEGETATION: dead plants and bramble to be removed & gapped up with native species.
EXISTING HEDGE / VEGETATION: to be removed to facilitate development.
EXISTING TREES: to be retained in accordance with BS 5837 'Trees in relation to Construction' 2012.
EXISTING TREES: to be removed in accordance with tree survey recommendations.
EXISTING TREES: to be removed / cut back to facilitate development.

PLANNING NOTES (SOFT LANDSCAPING):

- SOILS: Subgrade / subsoil to be prepared in accordance with BS 8601 and BS 4428 and scarified or ripped to 300mm depth prior to spreading topsoil to alleviate compaction and promote drainage. Imported topsoil to be in accordance with BS3882: 2015 'Multipurpose Grade' with minimum soil organic matter contents 1% greater than the minima value (or as approved). Imported topsoil (and 'as saved' if requested) is to be laboratory tested to BS3882: 2015 and ameliorated as required to meet the required characteristics as detailed within Table 1 of BS3882: 2015 specification. Grass areas to be a minimum depth of 150mm and shrub beds 300mm depth. Any weed / grass growth to be sprayed out with appropriate herbicide at least 10 days prior to cultivation. Incorporate proprietary non peat compost to BS1 PAS 100 to 50mm depth evenly worked into soil.
N.B Proposed services (electric, water, gas etc) in landscape areas should be installed as a minimum below the required topsoil depths and clearly identified in accordance with service / utility requirements.
BUILDING FOUNDATION DESIGN: All landscape proposals are to be referred to by the structural engineer during foundation design.
PROPOSED PLANTING: Should planting be required outside of the planting season (October - March) any bare root or rootballed stock specified is to be replaced with containerised stock to an appropriate or similar specification to the approval of the landscape architect prior to ordering.
EXISTING TREES: Where trees are to be retained they should be subject to a full arboricultural inspection to assess condition and safety. Retained trees shall be protected from damage by erection of 2.3m weldmesh fencing on a scaffold framework in accordance with BS 5837:2012 Figure 2. These barriers shall be maintained in position and in good condition until works are complete. Fencing to be located in accordance with Table D.1 at a radius of 12 times the stem diameter (single stem trees) or based on the combined stem diameter for multistem trees (trees with more than one stem arising below 1.5m above ground level) refer to Clause 4.6. Further precautions are to be taken as detailed within BS 5837:2012 6.2.4.
TREE SURGERY / REMOVAL: Tree surgery and tree removal to be carried out by an Arboricultural Association approved Tree surgeon in accordance with BS 3998:2010. Arrangements to be removed to a licensed tip.
TREE PLANTING: All trees to be in accordance with BS 3936, BS8545 and The National Plant Specification - 'Roottalled Trees' recommendations. Trees to be planted in accordance with BS 4428:1989, double staked (10-12cm - 14-16cm girth trees) or triple staked (16-18cm - 18-20cm girth trees) tied and braced with flexible webbing loops/belts and spacer collars/sleeves tied with a timber cross bar in prepared pits. Semi mature trees shall be underground guyed and securely anchored using Platipus Tree System. Tree pits in open field / un-compacted ground conditions or shrub beds to be 1000mm x 1000mm (at least 75mm greater than that of the root system) with pit depth to be based on the planting depth of the tree (distance from root flare to underside of rootball) in accordance with BS 8545:2012. Topsoils and subsoils to be excavated and stored separately for reuse. Tree pit to be backfilled with stored subsoil and topsoil at depths to replicate the existing soil horizons. Topsoil to be mixed enriched with 40L of peat free tree planting compost, incorporating 'Rootgrow' professional mycorrhizal fungi granules (RGPro as supplied by Empathy) and Sierrablen N Mag Pre-planter Fertiliser in accordance with manufacturers recommendations. Root balls to be encircled by Root Rain Metro or similar irrigation pipe. Well water after planting. The base of trees to be planted in grass areas to be covered with 75mm amenity grade bark mulch such as Melcourt 'Amenity' Bark Mulch (or similar approved by the landscape architect) to 1.0 metre diameter and kept weed free.
In confined urban areas i.e car parks & housing estates where trees are to be planted in heavily compacted ground, Small tree pits (Mature canopy 3m) should have a minimum of 4.24m3, Medium tree pits (Mature Canopy 5m) should have a minimum of 11.8m3, Large tree pits (Mature canopy 8m) should have a minimum of 24m3 (or to latest GreenBlue Urban Topsoil Volume Guidelines). Tree pits are to be excavated to achieve the above uncompacted growing volume with pits without cells being approximately 2.5m x 2.5m backfilled with excavated subsoil and topsoil (as described above) mixed with 160L of peat free tree planting compost. Where groups of trees or avenues are planted the pits are to be combined to achieve the required growing volume. Tree pits in poorly draining soils are to be positively drained, connecting into the surface water drainage system by engineers details.
Generally all trees are to be planted as shown ensuring a minimum of 5 metres from buildings and 3 metres from drainage or services. Suitable foundations are to be provided to accommodate proposed tree planting and retained trees in accordance with the NHBC Standards. The NHBC radii are illustrated as a guide only; retained trees to be planted in accordance with minimum foundation depths and should not be relied upon for construction purposes. In locations close to footpaths and roadways linear root barriers Greenblue Urban, ReRoot or similar are to be installed in accordance with manufacturers instructions. Where proposed tree locations conflict with services, trees are to be relocated in accordance with the appropriate utilities guidance notes subject to client / local authority approval. Proprietary root barrier Greenblue Urban, ReRoot or similar to be installed in accordance with manufacturers instructions where relocation is not considered appropriate.
SHRUB & HERBACEOUS PLANTING: plants to be in accordance with BS 3936 and handled in accordance with CPSE guidelines and planted in accordance with BS 4428. Nursery stock supplier to be approved by the Landscape Architect. All shrubs to have a minimum of three breaks, except Hedera with a minimum of two. Well water plants immediately after planting and prior to spreading of slate chippings. Planting areas to be covered with 50mm depth slate mulch such as Melcourt 'Blue Slate 40mm' (or similar approved by the landscape architect) laid onto geotextile membrane detailed below and kept weed free.
NATIVE HEDGE PLANTING: plants to be in accordance with BS 3936 and handled in accordance with the NPS 'Handling & Establishment' guidelines and planted in accordance with BS 4428:1989. Hedge plants to be pit planted in double staggered rows 350mm apart at 450mm centres (or as scheduled) with the growing tip (top 100mm) of the hedge plant removed to encourage spreading growth. Bare root transplants to be root dipped with 'Broadleaf Root Dip' with 'Rootgrow' mycorrhizal fungi granules (RGPro as supplied by Empathy) and Sierrablen N Mag Pre-planter Fertiliser sprinkled evenly into prepared planting pit in accordance with manufacturers recommendations prior to planting. In mixed species hedges; shrub species to be planted randomly throughout the length of hedge. Well water plants immediately after planting and prior to spreading of mulch. Planted areas to be covered with 75mm depth bark mulch and kept weed free. Where necessary plants to be protected from rabbits with rabbit fence and / or individual rabbit mesh guards securely staked. Unless otherwise indicated on the drawing it is assumed that all hedges are to be maintained at a maximum height of 1.5m for the purposes of the NHBC guidelines.
NATIVE SHRUB PLANTING: plants to be in accordance with BS 3936 and planted in accordance with BS 4428:1989. Transplants to be pit planted at 1 metre centres (or as scheduled) in random groupings of 3-5 and 7-10 shrub species depending on numbers of plants. Bare root transplants to be root dipped with 'Broadleaf Root Dip' with 'Rootgrow' mycorrhizal fungi granules (RGPro as supplied by Empathy) and Sierrablen N Mag Pre-planter Fertiliser sprinkled evenly into prepared planting pit in accordance with manufacturers recommendations prior to planting. Well water plants immediately after planting and prior to spreading of mulch. Planting areas to be covered with 75mm depth amenity grade bark mulch such as Melcourt 'Ornamental Bark Mulch' (or similar approved by the landscape architect) and kept weed free; on slopes greater than 1:3 a biodegradable geotextile i.e Ecomat Weed Control Fabric to be laid and secured pegged in place. Plants to be protected from rabbits, with rabbit fence and / or individual mesh tree guards securely fixed to timber stake(s).
WEED CONTROL: Geotextile membrane (to be Terram 'WeedGuard' or similar approved) laid on top of prepared topsoil (refer to Item 1.0) covering all planted areas with a minimum overlap of 200mm between sheets. Cut a cross and pin back the membrane for each individual plant location and dig out the soil below the cut large enough to accept the root ball. Well water plants immediately after planting and prior to spreading of mulch. Shrub areas to be covered with slate chippings as above and kept weed free.
WEED CONTROL ON STEEP SLOPES: proposed planting areas steeper than 1:3 (33%) gradient are to be designed appropriately by a suitably qualified engineer to ensure slope stability. Where appropriate bark mulch and geotextile membranes are to be replaced with proprietary mulch matting such as Greenfix 2.4m wide mulch rolls or similar.
GRAVEL: Gravel areas to be ornamental gravel, from local source 10-20mm, laid on geotextile membrane to a depth of 50-75mm.
MAINTENANCE: To be carried out at approximately monthly intervals to include the following:
a. Eradicate weeds by hand or appropriate chemical means.
b. Cut out dead or / and damaged stock or branches, prune as required.
c. Ensure all shrubs and trees are firmed in, securely staked and tied.
d. Collect litter, sweep and tidy site.
e. Apply suitable non-residual pesticides, fungicides, fertilisers and water as required.
f. Carry out grass mowing to turf when attained 100mm, cut to 35mm (50mm for shaded areas).
g. All hedges to plot frontages be maintained at a max height of 1.0m. Hedges and shrub planting within visibility splays to be maintained in accordance with current highways design guidelines.
WATERING: all plant material to be watered in dry periods until established during April through to September with a fine rose until the water penetrates the topsoil to at least 5cm depth and achieves field capacity. Frequency of watering regime to be determined by weather conditions, soil conditions and underlying geology, all plant beds to be watered to ensure soil is consistently moist to promote successful establishment. As a guide only it is suggested that during hot, dry periods, plants are to be watered every six to ten days. For individual trees it is suggested that 18 watering visits per year are carried out commencing late March (prior to budburst) and utilising a minimum of 50 litres of water per tree. Soil probe to be used to determine soil saturation to full depth of root ball.

PLANNING NOTES (PRUNING):

- PRUNING: to be carried out in accordance with BS 7370 Part 4, ensuring site operatives are fully trained. Recommendations are based on general pruning required to maintain plant health and vigor. Broad pruning principles are classified as follows within the plant schedule, refer to RHS Pruning Groups and species information for further details (https://www.rhs.org.uk/advice/profile?pid=954).
PRUNING CODES: the following codes have been applied to individual species within the plant schedule:
PG 1 Light Pruning
PG 2 Clematis Pruning Group
PG 3 Basal Shooting Shrubs
PG 4 Summer Flowering Shrubs
PG 5 Winter / Early Spring Flowering Shrubs
PG 6 Summer / Autumn Flowering Shrubs
PG 7 Pruning for Stems and Foliage
PG 8 Early Flowering Evergreen Shrubs
PG 9 Late Flowering Evergreen Shrubs
PG 10 Evergreen Shrubs
PG 11 Vigorous Climbers
PG 12 Moderately Vigorous Climbers
PG 13 Wall Trained Shrubs
PG C1 Clematis Pruning Group
PG C2 Clematis Pruning Group
PG N Pruning Generally Not Required
PG F Fruit Tree Pruning (specific to species)
PG BC Bamboo Cultivation
PG HB Herbaceous (specific to species)
PG GR Grasses (specific to species)
(Roses) Specific Requirements for Roses

Plant Schedule

Table with 6 columns: No., Species Name, Specification, Girth, Height, Density. Includes entries for Carpinus betulus 'Frans Fontaine' and Liriodendron tulipifera.

Tree Planting (Fruit / Orchard)

Table with 6 columns: No., Species Name, Specification, Girth, Height, Density. Includes entries for Malus 'Evereste' and Prunus spinosa.

Native Hedgerows

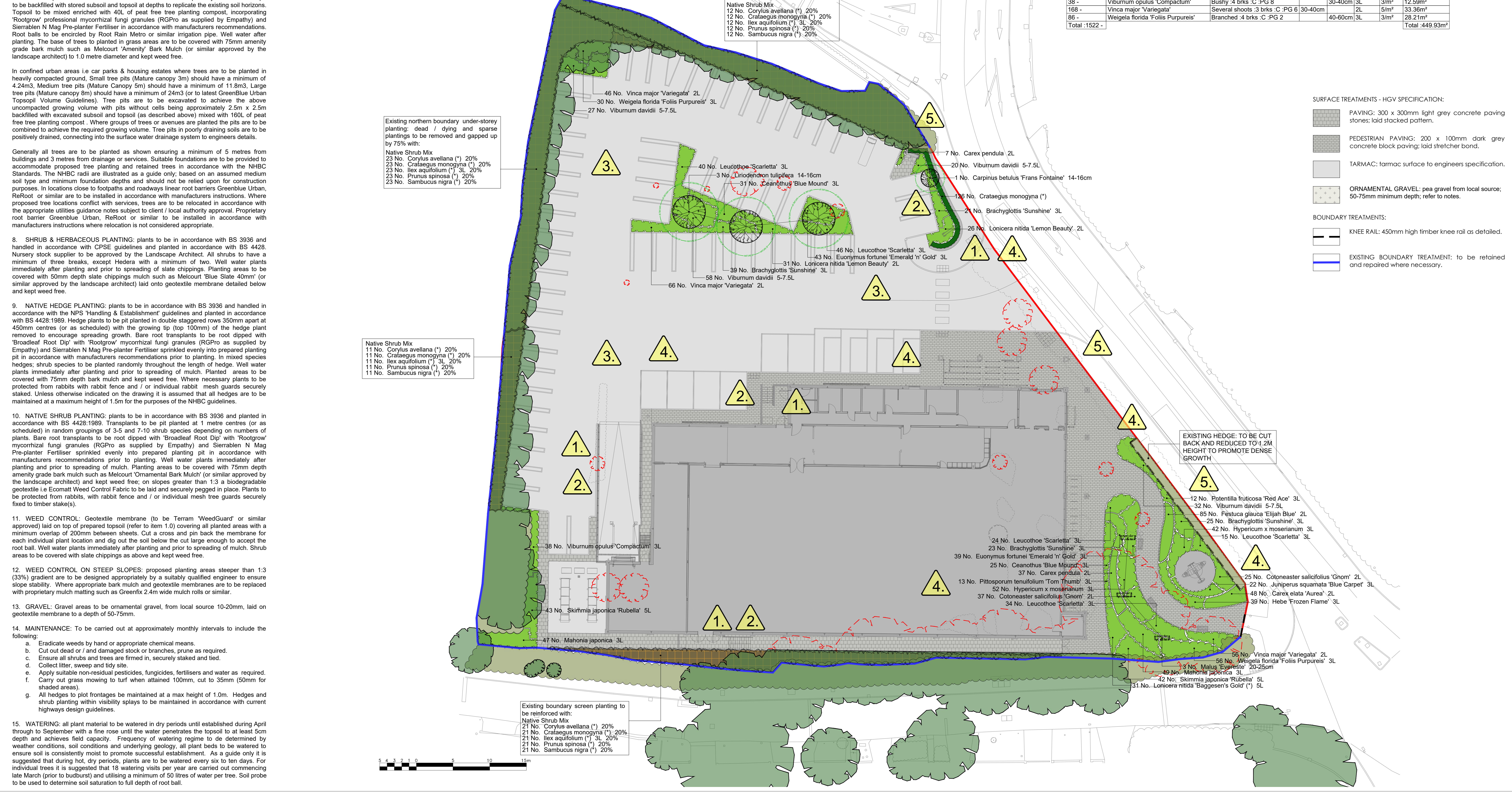
Table with 8 columns: No., Species Name, Specification, Girth, Diameter, Height, Pot Size, Density, Length. Includes entry for Crataegus monogyna.

Native Shrub Planting

Table with 8 columns: No., Species Name, Specification, Diameter, Height, Pot Size, Density, Area. Includes entries for Corylus avellana, Crataegus monogyna, and Sambucus nigra.

Ornamental Planting

Table with 8 columns: No., Species Name, Specification, Diameter, Height, Pot Size, Density, Area. Includes numerous entries for various ornamental plants like Brachyglottis 'Sunshine', Carex pendula, and various shrubs.



Revision table with columns: rev, date, amendments, off. Includes entries for P01, P02, P03, and P04.

Legend: CDM RESIDUAL RISKS. Lists 5 risk categories with corresponding yellow warning triangles: 1. LEVEL CHANGES, 2. RETAINING WALLS, 3. PEDESTRIAN & VEHICULAR TRAFFIC, 4. EXISTING SERVICES, 5. PUBLIC FOOTPATH.

It is assumed that works will be carried out by competent landscape subcontractor working where appropriate to a risk assessment and method statement approved by the Principal Contractor.

SURFACE TREATMENTS - HGTV SPECIFICATION:

- PAVING: 300 x 300mm light grey concrete paving stones; laid stacked pattern.
PEDESTRIAN PAVING: 200 x 100mm dark grey concrete block paving; laid stretcher bond.
TARMAC: tarmac surface to engineers specification.
ORNAMENTAL GRAVEL: pea gravel from local source; 50-75mm minimum depth; refer to notes.
BOUNDARY TREATMENTS:
KNEE RAIL: 450mm high timber knee rail as detailed.
EXISTING BOUNDARY TREATMENT: to be retained and repaired where necessary.

Client: LIDL UK GmbH
Project: Ickenham Road Ruislip
Title: Detailed Landscape Proposals
Status: PLANNING
Date: May '24, Scale: 1:200, Number: BEA-24-038-001, Checked: TGW

bea landscape design ltd logo and contact information: 132A The Westwood, Condon Road, Wolverhampton, WV5 9GB