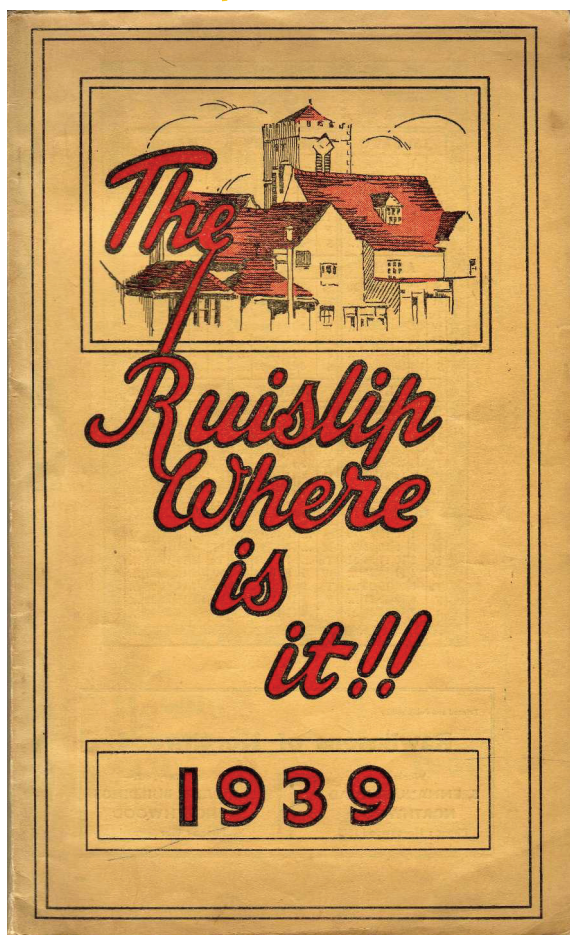




Ruislip Residents' Association

TOWN CRIER

The Voice of Ruislip Residents
October 2008



Inside this issue:

General Meeting

Lido Water Feature

History:
The Ruislip Where is it?

Manor Farm Studios

Community Success Sto-
ries

Planning Matters

Health Matters

Our Community in Action

Find out where....[page 6 and every other page!]

Ruislip Residents' Association
GENERAL MEETING: *SPOTLIGHT ON PLANNING*

8.00 pm Monday 20th October 2008
Winston Churchill Hall

We shall be dedicating our October 2008 General Meeting to **PLANNING**.

Planning continues to concern Ruislip Residents so now is your chance to find out more and put your questions to officials and councillors!

The General Meeting will begin with a talk by the Borough of Hillingdon Head of Planning, Jales Tippell, and her senior DC Manager, Beverley Kuchar, on the process of making a planning application, through consultation and grounds for objection, to approval or rejection, with comments on the appeals procedure.

This will be followed by "**QUESTION TIME**". The panel will include the speakers, Cllr. Keith Burrows, Cabinet Member for Planning and Transportation, Cllr. Bruce Baker, East Ruislip and Chair of the Hillingdon North Planning Committee, and Cllr. Philip Corthorne, West Ruislip and Cabinet Member.

This is your chance to ask questions on planning matters, e.g. what is happening in the Ruislip area, details of local and national planning policies, objection criteria, petitions, conservation areas, etc.

The meeting will conclude with further discussion over refreshments and end about 10pm.

Officers	
Chairman:	Peter Lansdown
Vice-Chairman:	Joan Davis
Treasurer:	John Perkins
Secretary:	Penny Rutherford
Chief Road Steward:	Brian Cowley
Deputy Ch. Rd. Stwd.	Joshua May

Committee	
Janice Andrews	Sue Seagroatt
Elma Hutton	Mike Hodge
Ian Cantley	Ivor John
Keith Allsopp	John Williams
If you would like to help with the work of your Association, please contact our Secretary.	

INSIDE THIS ISSUE OF THE TOWN CRIER

<i>People</i>	4
<i>Community Notice Board</i>	4
<i>Ruislip Lido: Water Play Feature</i>	5
<i>Ruislip where is it?</i>	6-7
<i>Manor Farm Studios (advertorial)</i>	8-9
<i>Community Successes: Churchfield Gardens & Hill Lane</i>	10-11
<i>Planning Matters</i>	12-13
<i>Health Matters</i>	14-15
<i>Community in Action</i>	Back cover

Contact us:

Mrs Penny Rutherford, Honorary Secretary
9 College Drive, Ruislip, HA4 8SD
01895 636193
email: feedback@ruislippresidents.org.uk

Your Town Crier

You may have noticed we have made some changes to the format and content of the Town Crier over the past year. We intend to continue developing your Town Crier to make it more attractive and focus on things that are relevant, and helpful and interesting to all sections of our membership.

New in this issue is the first of regular articles about Ruislip by the Ruislip History Society. This issue's article is "Ruislip Where is it?" by Eileen M Bowlt.

We currently publish the Town Crier in February, May and September each year. If you have suggestions for further improvements or would like to contribute an article, please contact our Hon. Secretary.

Inclusion of articles is subject to space and editorial committee approval. Not-for-profit entities that serve our community may request the inclusion of notices in our "Community Notice Board" section, subject to the same editorial and space restrictions and with a suitable contribution to publication costs.

PEOPLE

Solveig Stone

Ruislip Residents' Association seldom pays tribute to anyone other than members of its own Executive, but Solveig Stone, who died last month, must be an exception.

Solveig was a local Councillor for many years and a tireless campaigner for local facilities. Amongst her many other campaigns she will be remembered for her relentless fight to preserve our town landscape, always resisting the loss of family homes and the influx of flats. Never afraid to challenge authority, she was sometimes a lone figure, but was always much respected and loved. She will be sadly missed. Our commiserations go to her family in their grievous loss. They must be deeply proud of this Norwegian born lady, who rose to such a unique position in her adopted land.

Joan Davis

Freddie Lane

It is with sadness that I have to report the death of Freddie Lane, one of our two Vice-Presidents, on 31st August at the age of 84.

Freddie joined the Executive Committee in May 1989 as Editor of the Town Crier, editing almost fifty issues with great skill and patience until October 2004. He joined the Royal Navy at 17 and saw action in both the North Atlantic and the Pacific, later transferring to the Fleet Air Arm to fly Swordfish. He had a distinguished professional career, being elected to the Fellowship of the Institution of Mechanical Engineers. He was a lifelong member of the Liberal Party and edited their local newsletter. He was a delightful, friendly man and we shall all miss him.

Brian Cowley

COMMUNITY NOTICE BOARD

'Games Afternoon at Manor Farm Library Every Thursday from 2pm.

All age groups are welcome to come and play games of Scrabble, Whist, Dominoes, Cards, etc. in a friendly, informal and non-competitive atmosphere. Free to take part and tea, coffee and biscuits are included. Don't stay in on a wet Thursday afternoon come and join us. For further details phone 01895 558234'

The **Manor Farm House is now open** to the public every Saturday and Sunday from 10-3. Two rooms on the ground floor house the interpretation centre which explains the history of the site from Norman times to the present day, including hands on exhibits accessible to all ages

WATER PLAY FEATURE: RUISLIP LIDO

A water play feature has been talked about for some time, with costs initially looked at several years ago. The rationale is to give young visitors a 'wet' experience, without them going into the lake, and as an added visitor attraction.

The Friends of Ruislip Lido (FORL) took up the idea in their campaign to improve the facilities on the site. FORL was formed, prior to LMAG (see below), by Peter Silverman, and the water feature proposal was energetically progressed by David Seaman, who was actively involved in the design. After the formation of the Lido Management Advisory Group (LMAG – includes FORL and RRA) in 2006, FORL contacted suppliers for price estimates, so that funding could be arranged. Following unsuccessful bids for council capital funding, a meeting was held with Hillingdon Council's external funding officer to explore other possibilities. FORL then wrote to the Leader of the Council and Cabinet members to seek support, which was then forthcoming.

The project received £155,000 from the Council's capital programme.

The package includes a 300 m² play surface, with 12 individual water play items ranging from 3m tall serpent heads to small ground fountain sprays. The area is fully fenced with benches provided for parents and carers. The

feature has been designed for use by all abilities and has level access from the tarmac roadway. The features have been zoned for toddlers, young children and older children. Age limits will apply.

The scheme will run from mains water, draining straight into the lake.

Council staff will carry out weekly cleaning and annual commissioning and decommissioning within the existing Lido budget.

The feature is planned to open for the summer months, 10am to 6pm, weather dependent. Unfortunately the 2008 school summer holidays were missed, but the weather also went awol. There's always next year and many years to come!

It was in use from 20th September with an official opening expected in 2009.



RUISLIP WHERE IS IT?

A booklet called 'Ruislip Where is it?' started to be published annually in 1937, giving news of new shopping facilities, new housing estates and local societies. After a break during the war years, publication was resumed in 1948 and continued for a year or two. There have been plenty of directories and guides, commercial and official, both before and since. It is the name of this one that intrigues me. Just where is Ruislip? The answer to that question would differ depending upon when it was asked.

In the 1930s when the suburban development of the fields and farmlands of rural Middlesex was galloping apace, people had no doubt that Ruislip meant the area served by the underground stations, Ruislip, Ruislip Manor, South Ruislip and Ruislip Gardens. Most of the advertisements in the 1939 'Ruislip where is it?' are for businesses and shops in the High Street, with a sprinkling in Victoria Road, Windmill Hill, Parkway and Windmill Parade. Only the Café Myosotis in Long Drive and The Bell and Covent Garden Fruiters in West End Road represent South Ruislip and Ruislip Gardens. There were one or two intrusions by firms in Ickenham and even Ealing and the Black Horse on Eastcote Road and C.M.Robarts 'the most modern and up-

to-date dairy farmers in the country' on Deane Parade, Eastcote, thought it worthwhile to advertise. W. Lavender & Sons, timber merchant of Reservoir Road, reminded Metroland newcomers of the old, pre-suburban Ruislip, but even he declared 'site clearing' to be his speciality.

Roll back the centuries and 'Ruislip' would have conjured a completely different picture in people's minds. In medieval times Ruislip stretched from the Middlesex/Hertfordshire county boundary in the north to Northolt on the south and from Pinner and Roxeth to Ickenham east to west. Ruislip was both a manor, belonging to the Abbey of Bec and later King's College, Cambridge, based on the manor hall at what is now known as Manor Farm, and also a parish served by St Martin's Church. The northern hilly portion of Ruislip was covered in woodland and to a large extent still is, while on the flatter land to the south lay the huge open fields where crops were grown.

The settlement pattern produced a cluster of houses around the church and manor on the western side of the parish, scattered houses along the High Street as far as Field End (The Barn Hotel/Hawtrey's Restaurant), small hamlets called King's End and Little King's End on either end of the road now known as Sharps Lane and

RUISLIP WHERE IS IT?

houses up Bury Street with a settlement at Park Hearne, now mainly under the reservoir (Ruislip Lido). To all intents and purposes this is the area known as Ruislip in recent times. Then it was called Westcote.

Other areas of settlement in the Manor of Ruislip were to the north of the woods and consequently called Norwood or Northwood, and to the east, at Field End, Eastcote and along the lanes, Fore Street, Wiltshire Lane, Joel Street, Catlins Lane, leading from Eastcote High Road to the Common Wood that then covered what is now Northwood Hills.

The three areas were recognised as having separate entities and manor court rolls show that the manor was divided into three tithings, Westcote, Ascot (Eastcote) and Norwood (Northwood) represented by their own tithingmen at the courts held in the manor hall. Anyone with business at the court whether from Northwood or Eastcote had to come to Westcote for this purpose. Similarly all parishioners had to come to Westcote to attend church. Those living in Green Lane, Northwood, would have had a seven mile round trip, probably on foot! Obviously Westcote was the most important of the three areas because the two administrative centres were there.

The Vestry, composed of a group of leading parishioners, became responsible for local government from the beginning of the seventeenth century and the meetings were held in the vestry at St Martin's, although they were frequently adjourned to 'the sign of the One Bell', the Swan or the George. Northwood had ceased to exist as an administrative area and was divided between Westcote and Eastcote, each with its own constable and overseer of the poor. Vestrymen who lived in outlying areas had to travel to Westcote. Even when Northwood got its own church, Holy Trinity, in 1854, a Metropolitan Line station in 1887 and began to develop as a suburb, secular affairs continued to be dealt with by the Ruislip Vestry.

The dominance of the Westcote side of Ruislip came to an end in 1904, ironically the same year that the station opened, with the establishment of the Urban District Council. There were arguments about the name, Northwood-Ruislip or Ruislip-Northwood. The latter won, but the centre of administration moved immediately to Northwood, where the new council set up an office above a shop in Maxwell Road, before moving to Oaklands Gate in 1911.

Since then we all know where Ruislip is, or do we? [Eileen M. Bowlit]

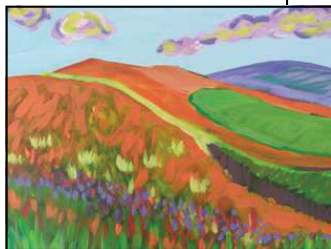
MANOR FARM COMPLEX: THE STUDIOS *(advertorial)*

Studio 1: Christine Smith

Christine is a BA (Hons) qualified Community Artist who has a wide range of experience in running art and craft workshops with the public. She is also a contemporary artist who uses the ancient craft of felt making to create vibrant wall hangings, cushions and accessories from wool.

Her interest in working with natural materials carries through into her mixed media work and she often combines found or recycled objects, with paint on canvas. She is happy to discuss any individual commission and her studio is open daily from 12.00 to 6.00pm.

Closed
Monday
and Thursday.



Studio 3: Shaun Higgins

Shaun is a furniture maker who specialises in creating fine bespoke furniture and free standing kitchens in the Shaker style. He uses traditional cabinet making techniques to create functional and beautiful pieces. His atten-

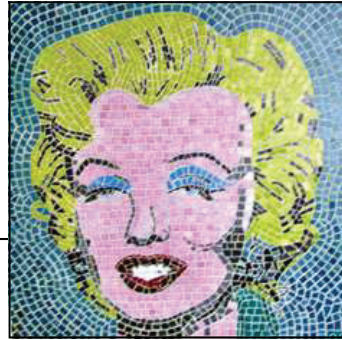


Michael Posner

Studio 2: Michael Posner

Michael is a potter with 15 years experience in the field and studied at the City-Lit and Kingsway college in London with acclaimed potters, Phil Rogers and David Leach. He has also studied specialist glazing techniques in Shigaraki, Japan. His pottery is influenced by the Leach tradition and Japanese Mingei. In his studio you will find a variety of domestic ware including bowls, mugs and one off vases and bowls. His studio is open Monday to Thursday and Saturday from 10.30 to 4.00pm. www.mikeposner.co.uk

tion to detail ensures that he chooses the right type of wood and grain for every piece he makes. The result is a timeless piece of furniture that will enhance any home. He would be delighted to discuss your requirements and his studio is open daily. Web site: www.shaker-maker.com



Studio 4: Toni Richfield

Toni specialises in mosaics and set up "Moo Mosaics" back in 1998 after a varied career in business administration, beauty therapy, horse management and make up artistry. After completing a course in mosaic making, she initially set up her business from home but soon moved into retail premises in Harrow. She has exhibited her work around the country and worked on more than 100 commissions. At her studio you will find a selection of designs including mirrors and wall panels. Prices start at £20 and you are welcome to commission your own design. Open daily from 12.00 to 4.00pm. Closed Monday and Friday.

Studio 5: Mita Samanta



Mita designs and makes by hand a variety of leather handbags and accessories. Each of her items is unique and created using traditional leather making techniques. She has been working with leathercraft for over 20 years and studied at Cordwainers College in London. Mita ensures that each item she makes is to a very high standard and every handbag is a work of art in itself. She is always keen to discuss your ideas and has a selection of her designs at her studio for sale. Commissions welcome. Open daily from 11.00 to 5.00pm. Closed Tuesday. Web site: www.sumilondon.com.

CHURCHFIELD GARDENS: COMMUNITY SUCCESS STORY *(Sue Seagroatt)*

This July, Churchfield Gardens was awarded a prestigious Green Flag. But what is a Green Flag Award and why has a small park in Ruislip received this coveted accolade?

What is a Green Flag Award ?

The Green Flag Award is the national standard for parks and green spaces in England and Wales and is a means of recognising and rewarding the best green spaces in the country. Awards are given to parks and gardens which demonstrate the commitment of the local council and the involvement of the local community to achieve this standard. The awards are determined by a team of independent judges who visit the parks and meet the local people and council.

Why has a small park in Ruislip got an Award?

In the case of Churchfield Gardens, the Green Flag award reflects the hard work and cooperation of the Council and a local community group, Friends of Churchfield Gardens, who met regularly to discuss and define an extensive refurbishment programme to restore and enhance the gardens' appearance. In the past year alone, this programme has included: much improved entrances with welcoming signboards; removal of two large and unsightly dis-

used sheds at the side of the tennis courts; installation of security fencing and refurbishment of the perimeter area, shrubs and trees; planting of the flower bed next to the children's playground; and a re-planted rose garden at the main entrance which is now thriving in all new soil. To maintain the Green Flag status the Council is required to keep this high level of maintenance and the "Friends" will work with them to make sure this happens.

Where and What are Churchfield Gardens ?

For those unfamiliar with the area, Churchfield Gardens lies just behind Ruislip High Street near St Martin's Church. It has entrances on Eastcote Road and Midcroft. The park itself is a green space and has a children's playground, tennis courts and a rose garden.

The park is very well used by local residents and provides an attractive and pleasant area to relax and play away from the bustle and noise of the nearby high street.

For More Information

To learn more, see the links on our web site to Green Flag information. If you would like to join the Friends and/or help out with their bulb planting this autumn, email Christine Jamison c/o feedback@ruislipresidents.org.uk



A COMMUNITY SUCCESS STORY: HILL LANE *(Keith Dorricott,)*

On what seems like one of the few dry evenings of the summer, the community police stopped by Hill Lane Park, West Ruislip. They saw a tranquil scene of parents chatting while keeping an eye on their children on the slide or pushing them on the swings. Another family was finishing a picnic and some teenagers were sitting in a shelter at the far end of the park chatting. This is what it has all been for!

Contrast with a year ago when most locals didn't know the park existed and it had dilapidated, vandalised equipment,

covered in graffiti. It was overgrown, covered with litter and was a favourite hang out for local youths drinking and smoking who knows what.

So what made the difference? Local people working together with the council, the councillors, the community police and BWI school. With a generous grant from Hillingdon Council Chrysalis Fund and the formation of the Hill Lane Hurricanes we have made this transformation happen. We planned the park and tackled numerous issues through our determination – graffiti, noise, litter,

vandalism, overgrown trees. We get together regularly to continue to drive improvements in our local neighbourhood – simple things that make a difference such as where to put new bins to reduce litter, where new trees should be planted and which paths need to be cleaned more regularly.



Carys Walker, Community Leadership Co-ordinator
Damien Searle, Green Spaces Area Officer
Becky Haggar, Cyril Haggar, Dorothy Barrett, Esther Jones, Keith Dorricott, Hill Lane Hurricanes

It's evenings like that Friday that make it worth while. We can all live in great neighbourhoods as long as we take an interest and work together.

The park was officially reopened by the Mayor on the 24th July with a community picnic and repre-

sentatives from Hillingdon Council, community police and fire service.

If you live on or near Hill Lane and would like to join us or find out more, please contact our chairman, Becky, on 01895 637444 or via email beckyandcyril@haggar129.fsnet.co.uk

We love local **Community Success Stories** and we'll be delighted publish yours subject to editorial committee approval and space restrictions. Contact us at : feedback@ruislipresidents.org.uk

PLANNING MATTERS *(Mike Hodge & John Williams)*

While the demolition of established family homes and replacement with blocks of flats continue to be a major concern of residents, there have been some other controversial planning applications since our last report.

Midcroft: the owner of the Murco filling station submitted an application for a four storey, 60 bedroom hotel. We joined with local residents in objecting to the proposal which was completely out of character with the area and would have had a detrimental impact on the adjacent business premises. We were pleased when Council officers recommended refusal and the owner withdrew the application.

The Orchard, Ickenham Road, where Whitbread are proposing a two storey rear extension and alterations to the existing building, to create a 24 bedroom hotel has been under consideration by the Council for several months.. Amended proposals have just been submitted and we are hoping these take account of residents' concerns.

Blubeckers Restaurant submitted an application to build a terrace overlooking the Duck Pond on the **Manor Farm Complex**. Whilst not wishing to restrict the expansion of a local business, opinions were divided on whether this was a desirable devel-

opment, particularly in view of the recent £2.5m refurbishment of the complex. We were also concerned that there was a lack of detail on the future management of the facility, as there appeared to be some discrepancies in respect of the ownership of the application site. Shortly after raising these issues with the Council the application was withdrawn.

On the residential front our Area Road Steward, Sue Browne, continues to coordinate residents' opposition to proposals for flats in the Kingsend area including applications at **Little Orchard, Wood Lane, 28a and 45 Kingsend**, and also **55-59 Pembroke Road**. The latter has already been refused by the Council and is now the subject of an Appeal.

Developer, Daniel Family Homes (DFH) previously submitted several applications to redevelop **2 Windmill Hill**. After obtaining permission for two semi-detached houses they have tried unsuccessfully to obtain consent for a much larger building of 5 flats. Along with local residents we felt the proposal was too large and would impact adversely on neighbouring properties. Before the Council could determine the latest application DFH lodged an Appeal with the Planning Inspectorate and we continue to vigorously support local residents' objections.

PLANNING MATTERS

Another application by DFH to replace the bungalow at **81 Shenley Avenue**, with a block of four back to back houses, was refused by the Council and this is now also the subject of an Appeal. We feel this type of development is completely out of character with the area and have registered our concerns with the Inspectorate.

On land at the rear of **69-83 Park Way** a proposal to build 10 flats was finally refused on Appeal. We

were particularly concerned that the proposal would have affected the viability of retailers in Park Way, some of whom were dependent on the land for ancillary use. Fortunately the Inspectorate agreed and dismissed the Appeal.

In **Sharps Lane** a proposal to replace **No 35** with 4 flats was refused and at **Nos 22-28** McCarthy and Stone's appeal, for a block of 35 flats withdrawn.

Planning Enforcement Seminar

Of concern to this, and other local associations, is the matter of enforcement when developers contravene the planning rules. At a Planning Enforcement Seminar at

the Civic Centre we were encouraged by the attention now being given to this problem.

**Interested in local planning matters?
Don't miss our next
General Meeting: Spotlight on Planning
Winston Churchill Hall, 20th October.**

(See inside front cover for full details)

Local Development Framework

We have also responded to the consultation on the latest stage of the Council's Local Development Framework review. The final document will replace the Council's existing Unitary Development Plan setting out their planning policy for the next few years.

Did You Know?

Following a review of work that can be carried out without needing planning permission the Government has announced changes effective from 01 October 2008. They are generally a relaxation of the rules and include minor roof alterations, loft conversions and rear extensions, intended to reduce the number of household planning applications. However, to help reduce the risk of flooding certain types of new paving in front gardens will now require planning permission.

Details can be found on a Government website under www.planningportal.gov.uk/uploads/hhg/houseguide However we recommend that, before carrying out any such works, members always discuss their proposals with the Council's Planning and Building Control departments.

Mount Vernon Treatment Centre

The Treatment Centre expects to receive its first patients in January 2009 but its official opening is likely to be in March 2009. As Her Majesty the Queen opened the Princess Christian Unit, to which the Treatment Centre is attached, she has been invited to open the new building. Her response is awaited. It should be a grand occasion!

Mount Vernon Chemotherapy Suite

Plans are advanced to build a brand new chemotherapy suite in the Mount Vernon Cancer Centre. An appeal for £1.4 million to fund these plans is close to success, but it is currently just £200,000 short of its target. How could we help? Contact me with suggestions!

Traffic and parking

We are urging that a traffic engineer reviews the flow of traffic in Mount Vernon Hospital as well as entrances and exits off the Rickmansworth Road. We have always pressed for improved car parking, which is bearing fruit. The new Treatment Centre will have lots of disabled parking spaces close to the entrance and the new car park (replacing "C" Block) will be on level ground, near to the Treatment Centre, introducing a very welcome additional 50 parking spaces to the site.

We are also challenging the Trust to use its influence to deal with the notorious junction from Harefield, opposite the Green Man, onto the Rickmansworth Road. Patients attending the Cancer Centre use that road and dread the bottleneck at the junction. Both there and at the main entrance into the hospital, traffic control measures are essential if accidents are to be avoided.

Local Involvement Networks (LINKs)

The Government has replaced Patient and Public Involvement with Local Involvement Networks, which are now the official bodies for public contacts with the NHS and Social Services. Ordinary people can become LINK members and join work groups looking in detail at health services – and, for the first time, Social Services too.

This is an exciting development. Its success will depend on people joining who want to improve services - personal involvement can range from simply receiving occasional reports right through to major participation in particular projects, which can be as challenging as the members choose. Individual people can become members of LINKs and so can organisations, which then nominate their own representatives.

Choice will be extensive – mental health services / carers' issues / end of life care / social services support at home / meals on wheels / diabetic services / heart attacks / strokes etc. etc. The list could be endless! .

Hillingdon Council has appointed HAP Ltd as Hillingdon LINK's administrative support. Charles OKell is LINK Officer. They are already working with early members of the Hillingdon LINK.

An important general meeting is to be held on Tuesday 7th October at 7pm at the Civic Centre. It is hoped people will come from across the Borough. Those present will decide how the Hillingdon LINK will be set up and operate. The Steering Group and Chairman for the year ahead will be elected at the meeting. It should be a very interesting meeting, so do come along.

Joan Davis, Tel: 01895 636095

Mount Vernon Cancer Centre – Good News Confirmed

A month ago we saw that the tide was turning for the Mount Vernon Cancer Centre and this splendid news was confirmed on September 4th. However, the BBC's mid-day television news was ambivalent, leading some listeners to think the Cancer Centre was under threat, when exactly the opposite was true!

The Review's Publicity Officer was onto the BBC double-quick, and the next TV report made clear that the current proposal is to reject the Varley 2002 recommendation to move the Cancer Centre out of Mount Vernon. Major changes since 2002 suggest that instead of closing the Cancer Centre its services should be expanded, possibly by making Mount Vernon the hub of a system with satellite services in other hospitals.

However, in order to reject the Varley recommendations, all stakeholders must first be consulted, so public consultation is underway until 4th November. The discussion document is available on-line at www.enherts-pct.nhs.uk/mvcc - or telephone 01707 369701. We hope many members will respond to this consultation, so that the public voice is loud and clear. We want the Cancer Centre to stay at Mount Vernon!

AROUND RUISLIP: COMMUNITY IN ACTION



Hill Lane Park has been transformed through the tireless efforts of the specially formed community group Hill Lane Hurricanes. Supported by Carys Walker (Hillingdon Community Leadership Support Officer) and Councillors Solveig Stone and Philip Corthorne, the Hurricanes secured £100,000 funding to undertake this fantastic transformation. [p11]

This July, **Churchfield Gardens** was awarded a prestigious Green Flag, which reflects the hard work and cooperation of the Council and a local community group, Friends of Churchfield Gardens. [p10]



School's art project at Mount Vernon.

Each year Bishop Ramsey School produces a new set of work which is displayed in the corridor of the Princess Christian Unit. Take a look if you are visiting the hospital.

If one of the artists would like us to exhibit a piece in the Town Crier, please get in touch.

Lido Water Play Feature

The Friends of Ruislip Lido (FORL) took up the idea in their campaign to improve the facilities around the Lido. The proposed water play feature is now a reality. We all look forward to an official opening in 2009. [p5]

